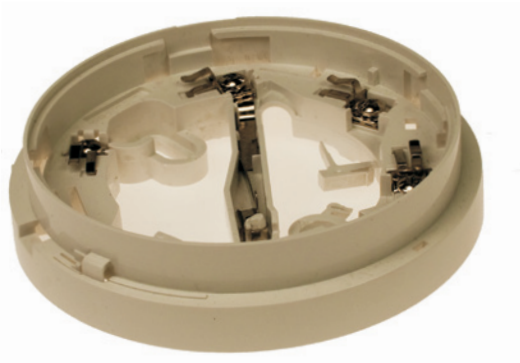


## Standard Detector Bases 4B-C 4" Continuity Base



The new 4B-C 4" continuity base is designed to snap-fit to the ceiling tile adaptor or it can screw fix to a ceiling in the traditional manner. The 4B-C 4" continuity base is designed specifically for use with the 850 series detector and provides a switching mechanism that ensures continuity when the detector (and built-in short circuit isolator) is removed. When used with the time saver ceiling tile adaptor, the 4B-C 4" continuity base uses a snap-fit mechanism that saves installation time.

### Features

- For use with the 850 series detectors
- Compact rigid design that improves the appearance and is easy to install
- Built-in continuity switch that closes on detector removal
- Electronics free, permits in circuit testing
- Snap fit to the time saver ceiling tile adaptor
- Detector locking pin included
- Detector park position for service and commissioning, holds the detector mechanically in place whilst disconnected from the loop and continuity switch is closed
- Choice of 8 mini-trunking break-outs

### Order Code

517.050.042      4B-C 4" Continuity Base

## 4B 4" Detector Base



The new 4B 4" detector base is designed to snap-fit to the ceiling tile adaptor or it can be screw fixed to a ceiling in the traditional manner.

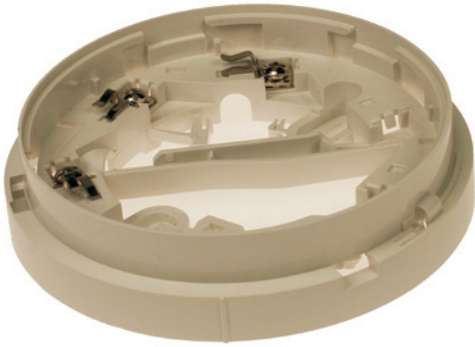
### Features

- Compatible with 830 series detectors
- Drives a remote indicator
- Detector locking pin provided with every base
- Snap fits to the Time Saver Ceiling Tile Adaptor
- Fits directly to a British or European electrical back box
- Temporary park position
- Break-outs for surface mount

### Order Code

517.050.041      4B 4" Detector Base

## 4B-I 4" Isolator Base



The new 4B-I 4" Isolator base is designed to snap-fit to the ceiling tile adaptor or it can screw fix to a ceiling in the traditional manner. The 4B-I 4" base is designed specifically for use with the 830 series detectors and provides protection against short circuit faults on the MZX digital addressable loop.

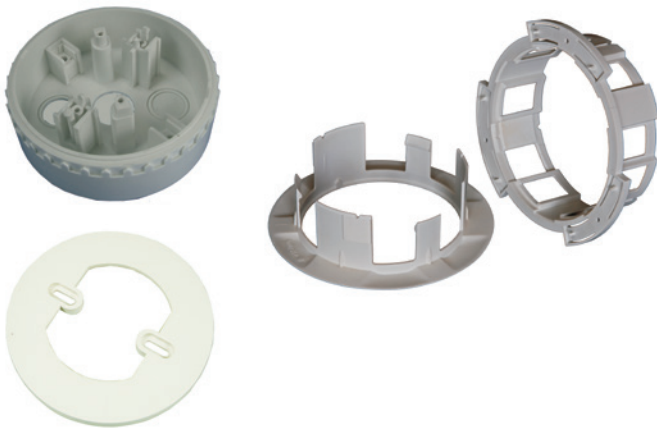
### Features

- For use with the 830 series detectors
- Compact rigid design that improves the appearance and is easy to install
- Up to 250 x 4B-I 4" isolators can be connected on each loop
- Snap fit to the time saver ceiling tile adaptor
- Detector locking pin included
- Detector park position for service and commissioning, holds the detector mechanically in place whilst disconnected from the loop
- Choice of 8 mini-trunking break-outs

### Order Code

517.050.043      4B-I 4" Isolator Base

## Ceiling Tile Adapter



The Time Saver Ceiling Tile Adaptor is used with the 4" snap fit base and consists of three parts, a bezel and clamp that are fitted to the ceiling tile and a back-box that carries the detector and base assembly. It is available as a complete unit or alternatively, the back-box can be ordered separately, as can the bezel and clamp assembly. Ordering the parts separately may be preferred if there is an extended period before the false ceiling is installed e.g. "shell and core" projects. Requires a 127mm diameter hole. The CTA adaptor plate allows the Time Saver Ceiling Tile Adaptor to be used with other devices such as the AV Base, 802SB or Mini Firecryer.

### Features

- Cuts installation time by 30%
- Commission the system before the suspended ceiling is installed
- Suitable for ceiling tiles from 1mm to 30mm thick
- Made from flame retardant material
- No additional back-box is required
- Time saver is designed for use with a new snap-fit 4" detector base
- Adaptor available for use with the AV base & other devices

### Order Codes

517.050.060	Ceiling Tile Adaptor Kit consists of 1 x 517.050.056 and 1 x 517.050.057
517.050.056	CTA-BB CTA Back Box
517.050.057	CTA-BC CTA Bezel and Clamp
517.050.058	CTA-AP CTA Adaptor Plate

## 4B-6A 4" to 6" Adaptor



The 4B-6A 4" to 6" Adaptor is designed for use with U.S. style 6" electrical back boxes and provides a flush architectural trim between the electrical box and the 4B-C 4" continuity base. It can also be fixed directly to a ceiling and used to conceal marks left when older, large diameter detectors are replaced with MZX Technology.

### Features

- Adapts 6" electrical boxes to fit the 4B-C 4" continuity base
- Architectural trim for neat appearance
- Concealed fixings
- Use to conceal marks left by old detectors when replaced by MZX Technology

### Order Code

517.050.054      4B-6A 4" to 6" Base Adaptor

## Functional Detector Bases MKII Sounder Base



A low current range of sounder bases for use with Conventional and Addressable Fire Alarm Control Panels.

### Features

- Manufactured to EN54 part 3
- Integral sounder and detector base
- Volume and tone adjustable after installation
- Low Power Synchronisation
- Do not require use of a standard base (maybe installed directly onto a standard besa box)

### Order Codes

516.800.911	901SB Universal Sounder Base
516.800.913	812SB MZX Loop Powered UL Sounder Base
517.050.022	Volume Pot Spare Cover (1 sheet of 144)
517.050.005	4" Detector Base Locking Pin Kit (PK100)